



# Working Instruction, Mechanical

Applicable for W980

## CONTENTS

<b>1</b>	<b>Introduction .....</b>	<b>3</b>
1.1	Equipment .....	4
1.2	General cautions .....	5
1.3	Adhesives .....	5
<b>2</b>	<b>Disassembly Lower Unit.....</b>	<b>6</b>
2.1	Overview .....	6
2.1.1	Cover Battery Sub Assembly and Battery .....	7
2.1.2	Cap Screw Lower .....	8
2.1.3	Cover Lower Rear Sub Assembly .....	9
2.1.4	Cover Lower Front Sub Assembly .....	10
2.1.5	PCB.....	11
2.1.6	Memory Sub Assembly .....	13
<b>3</b>	<b>Disassembly Instruction Upper unit.....</b>	<b>14</b>
3.1	Overview .....	14
3.1.1	Cap Screw Upper Top.....	15
3.1.2	Cover Upper Rear Sub Assembly .....	16
3.1.3	Cover Upper Front Assembly .....	17
3.1.4	Cover Hinge .....	18
3.1.5	Hinge Flex .....	19
<b>4</b>	<b>Replacements.....</b>	<b>21</b>
4.1	Cover Battery Sub Assembly .....	22
4.2	Cap Screw Lower .....	22
4.3	Cover Lower Rear Sub Assembly.....	22
4.4	Cover Lower Front Sub Assembly.....	22
4.5	Cap Screw Upper Top .....	22
4.6	Cover Upper Rear Sub Assembly .....	22
4.7	Cover Upper Front Assembly.....	22
4.8	Cover Hinge .....	23
4.9	Hinge Flex .....	23
4.10	Hinge Sub Assembly.....	23
4.11	Keyboard Main.....	24
4.12	Key Volume .....	25
4.13	Key Mode .....	26
4.14	Camera Module QCIF .....	27
4.15	Magnet.....	28
4.16	Touch key Module .....	29



4.17 Display 2.22 TFT .....	32
4.18 Display 1.5 TFT .....	34
4.19 Camera 3.2 Mpixel .....	36
4.20 Dome sheet .....	37
4.21 Shield Can Lid .....	38
4.22 Memory flex module.....	39
4.23 Memory/Sim PWB.....	41
4.24 Memory/Sim PWB Carrier Holder .....	44
4.25 Memory/Sim PWB Carrier Plate .....	47
4.26 Antenna Main.....	49
4.27 Cushion Video Camera .....	50
4.28 Net Receiver.....	51
4.29 Cushion System Connector .....	52
4.30 Sheet upper sub LCD.....	53
4.31 Cushion Thor .....	54
4.32 Sheet RF1 .....	55
4.33 Plastic Sheet(Sub PWB) .....	56
4.34 Sheet (Hinge Frame) .....	58
4.35 Cushion Speaker .....	59
4.36 Key Locking Black .....	60
4.37 Cushion Main Camera.....	61
4.38 Water Indicator .....	62
4.39 Cushion Lock.....	63
4.40 Sheet PWB .....	64
4.41 Label 65	
<b>5 Reassembly Upper Unit.....</b>	<b>66</b>
5.1 Overview .....	66
5.1.1 Hinge Flex .....	67
5.1.2 Cover Hinge .....	69
5.1.3 Cover Upper Front Assembly .....	70
5.1.4 Cover Upper Rear Sub Assembly .....	71
5.1.5 Cap Screw Upper Top.....	72
<b>6 Reassembly Lower Unit.....</b>	<b>73</b>
6.1 Overview .....	73
6.1.1 Memory Sub Assembly and PCB .....	74
6.1.2 Cover Lower Front Sub Assembly .....	76
6.1.3 Cover Lower Rear Sub Assembly .....	77
6.1.4 Cap Screw Lower .....	78
6.1.5 Battery and Cover Battery Sub Assembly .....	79
<b>7 Revision history .....</b>	<b>80</b>

# 1 Introduction



## 1.1 Equipment

### SPECIAL TOOLS

- NTZ112459 Torque Screwdriver (or equivalent)
- NTZ112288 Bits (Torx No. 6)
- NTZ1121052 Bits (JCIS No 0)
- NTZ112302/2 Front Opening Tool
- NTZ112521 Flex Film Assembly Tool
- NTZ112590 Guitar Pick #Plectrum#
- 1207-0198 Camera Removal Tool 3MPixel
- Nylon Pointer



### STANDARD TOOLS

Standard tools text:

- Dentist Hook
- ESD Tweezers



### ESD EQUIPMENT

Protect the phone from ESD damages whenever it has been opened by using:

- ESD-wristband
- ESD-gloves



### LABEL EQUIPMENT

The following special equipment is required when replacing or installing a new label:

- Hot air flow solder station
- Zebra printer connected to computer





## 1.2 General cautions

The following cautions are considered to be generic for all phone models and will not be repeated in the Disassembly, Replacements and Reassembly sections:

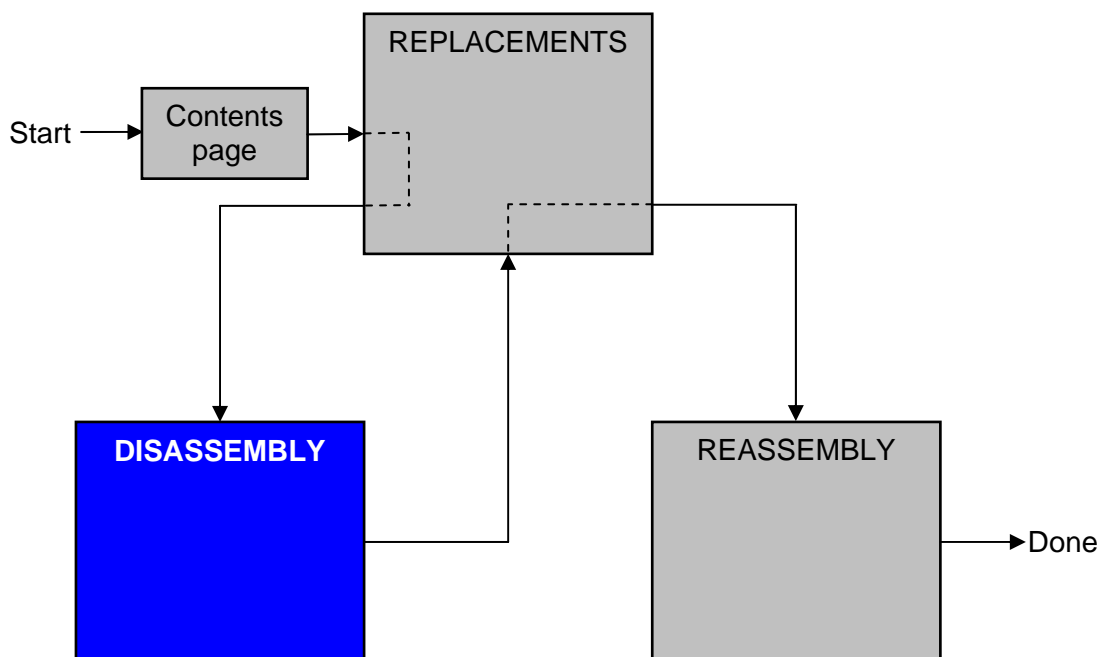
- Switch off the phone and remove any memory stick before the start of the disassembly!
- Keep all contact surfaces clean!
- Be careful when using tools like the dentist hook, tweezers, opening tools, guitar pick etc. to avoid scratches or damages to the exterior and interior parts of the phone!
- Be careful not to damage any contact springs!
- Remember to remove the protection foils on new parts such as the front cover and lcd!
- Never touch the display glass!
- Use air blow equipment to keep the front window and display module dust free!

## 1.3 Adhesives

Use a dentist hook and/or the tweezers to remove old adhesives.  
Clean the surface with isopropyl alcohol before attaching new adhesives.

## 2 Disassembly Lower Unit

When you are going to replace a part being listed in *Replacements*, the instruction of that section usually begins by directing you to this *Disassembly* section with a specification of the instructions you have to carry out in order to disassemble the phone as far as needed before returning to *Replacements* for the actual replacement.



### 2.1 Overview

The disassembly is done in the following sequence:

1. Cover Battery Sub Assembly
2. Battery
3. Cap Screw Lower
4. Cover Lower Rear Sub Assembly
5. Cover Lower Front Sub Assembly
6. PCB
7. Memory Sub Assembly





## 2.1.1 Cover Battery Sub Assembly and Battery

Remove the Cover Battery Sub Assembly with your fingers

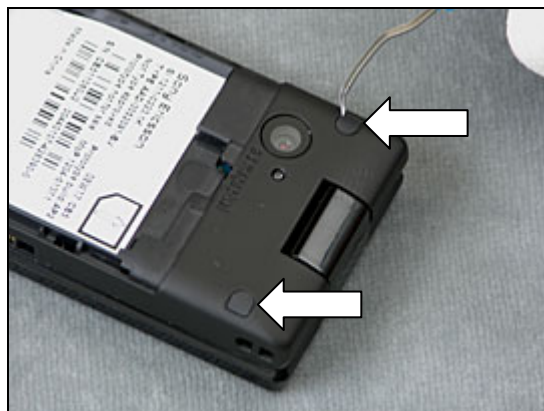


Remove the Battery with your fingers

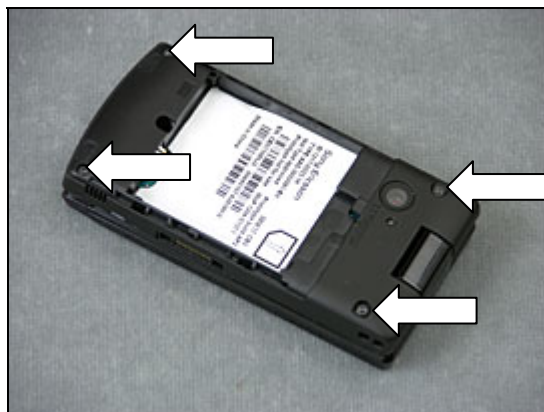


## 2.1.2 Cap Screw Lower

Use a Dentist Hook to remove the two Cap Screw Lower



Use Torx Bit no. 6 to remove these four Screws.





## 2.1.3 Cover Lower Rear Sub Assembly

Use a Guitar Pick to slide and unlatch the Cover Lower Rear Sub Assembly at the bottom.



and on the side



and on the other side

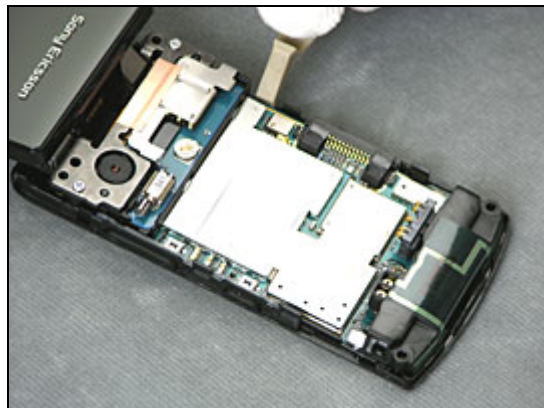


Remove the Cover Lower Rear Sub Assembly

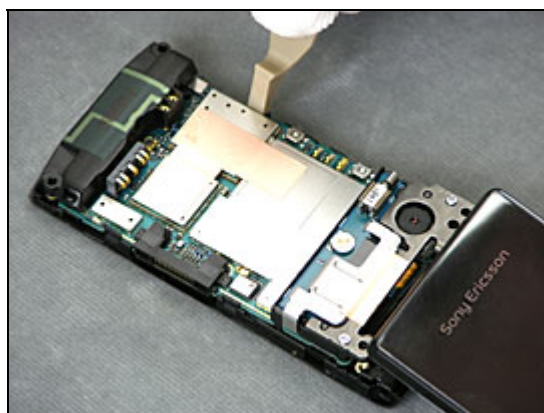


## 2.1.4 Cover Lower Front Sub Assembly

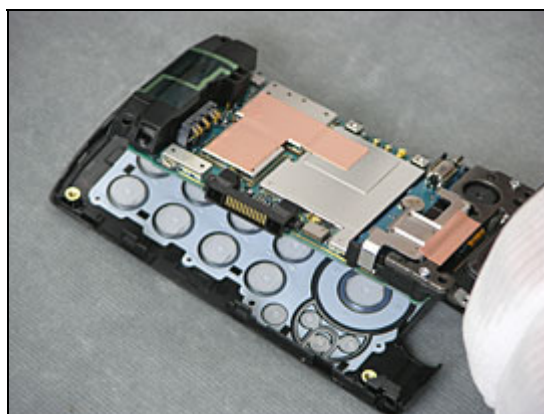
Use a Front Opening Tool to release the Cover Lower Front Sub Assembly



and on the other side

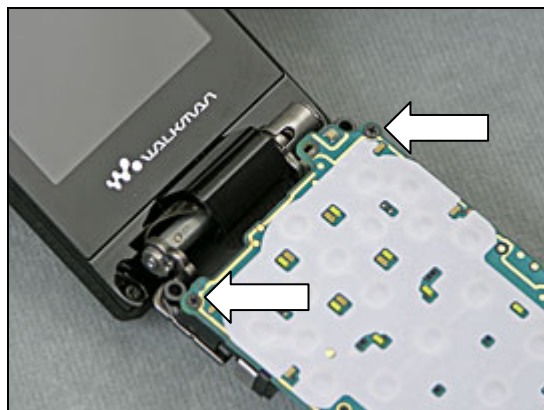


Remove the Cover Lower Front Sub Assembly

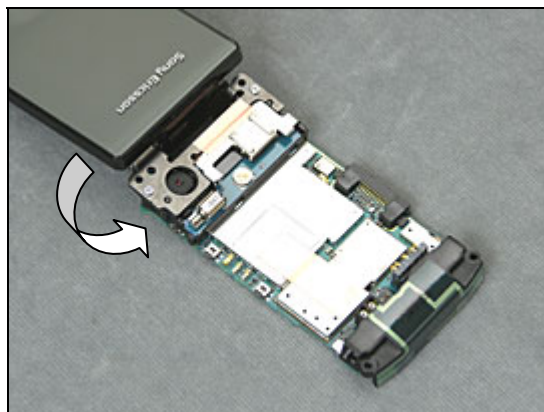


## 2.1.5 PCB

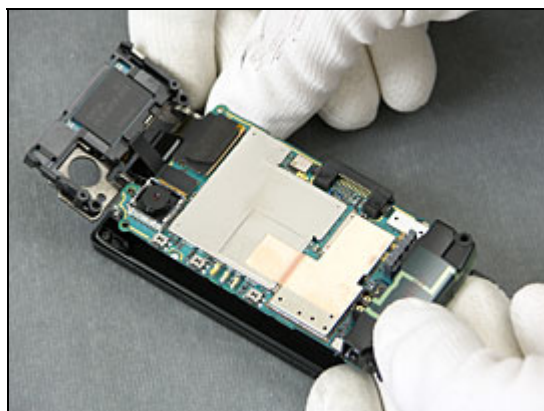
Use a JCIS Bit to remove these two Screws.



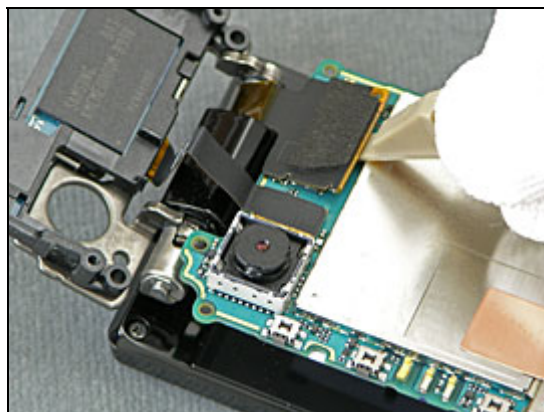
Flip the Upper Unit underneath the PCB



to this position

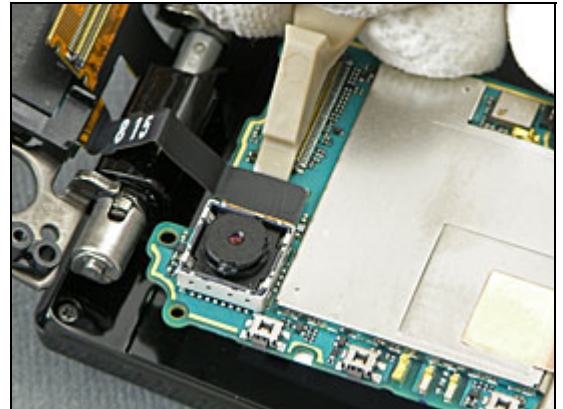


Use a Front Opening Tool to disconnect the BtB connector.

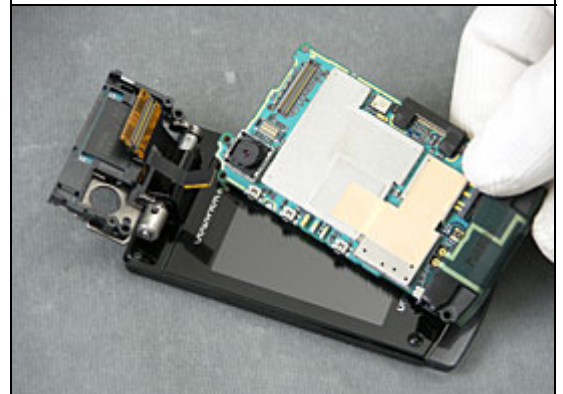


## PCB (continued)

Use a Front Opening Tool to disconnect the BtB connector.



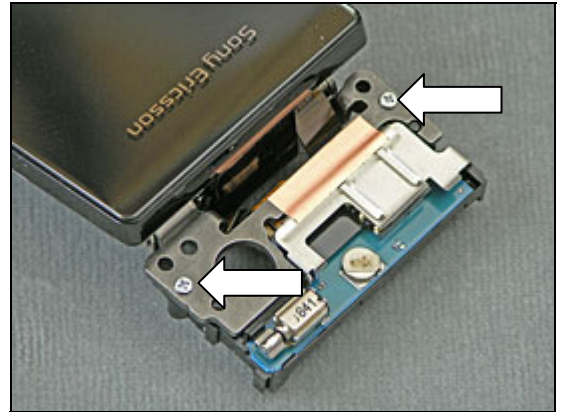
Remove the PCB





## 2.1.6 Memory Sub Assembly

Use a JCIS Bit to remove these two Screws.

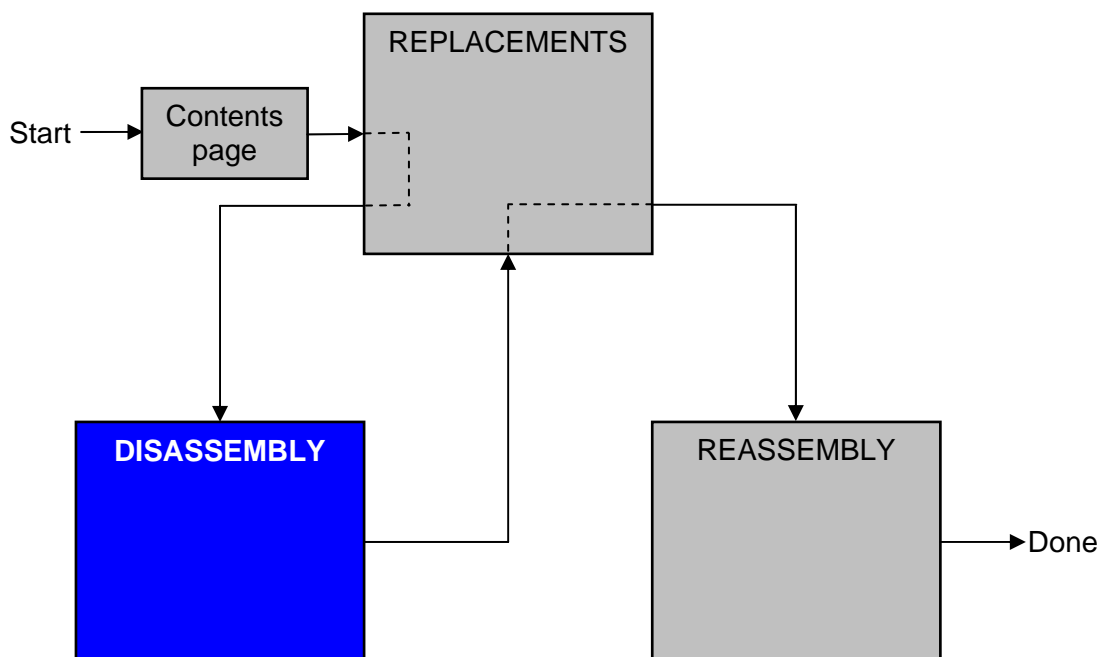


Remove the Memory Sub Assembly



## 3 Disassembly Instruction Upper unit

When you are going to replace a part being listed in *Replacements*, the instruction of that section usually begins by directing you to this *Disassembly* section with a specification of the instructions you have to carry out in order to disassemble the phone as far as needed before returning to *Replacements* for the actual replacement.



### 3.1 Overview

The disassembly is done in the following sequence:

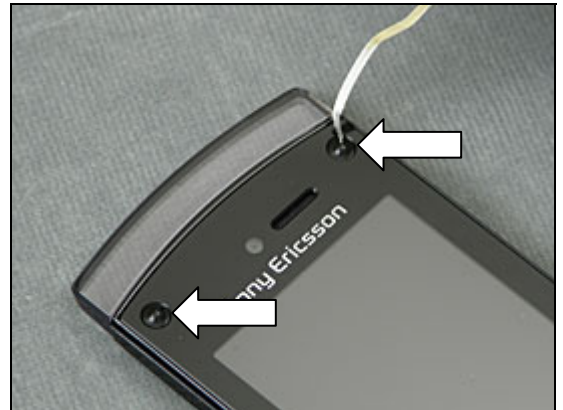
1. Cap Screw Upper Top
2. Cover Upper Rear Sub Assembly
3. Cover Upper Front Assembly
4. Cover Hinge
5. Hinge Flex





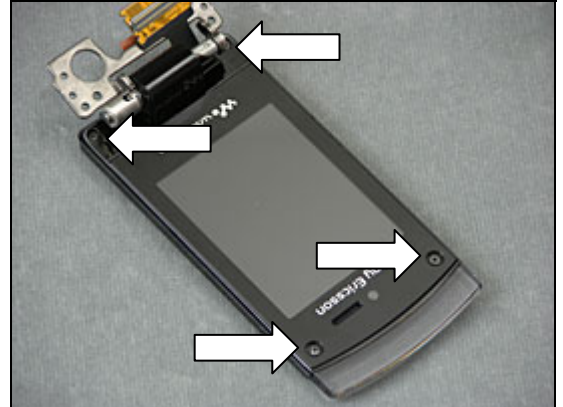
### 3.1.1 Cap Screw Upper Top

Use a Dentist Hook to remove the two Cap Screw Upper Top



### 3.1.2 Cover Upper Rear Sub Assembly

Use a JCIS Bit to remove these four Screws.



Use a Guitar Pick to slide and unlatch the Cover Upper Rear Sub Assembly at the side.



and on the other side

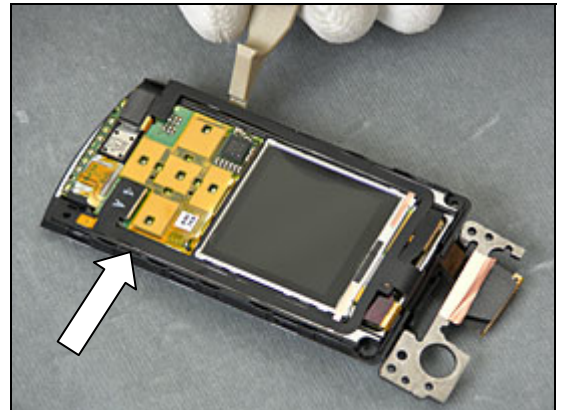


Remove the Cover Upper Rear Sub Assembly



### 3.1.3 Cover Upper Front Assembly

Use a Front Opening Tool to unlatch the Cover Upper Front Assembly at both sides.

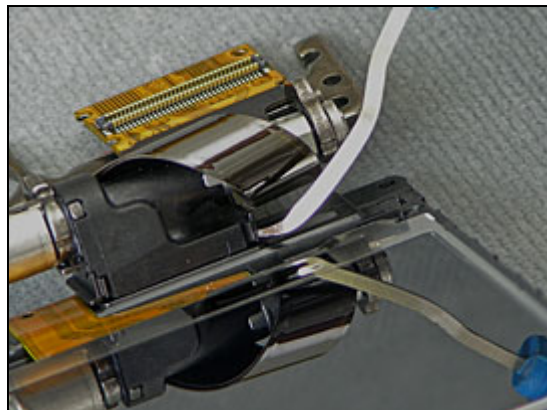


Remove the Cover Upper Front Assembly

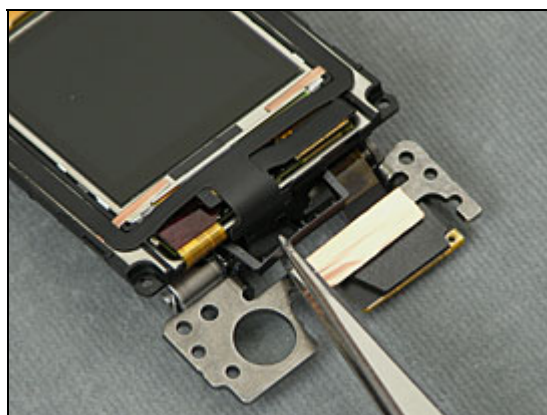


### 3.1.4 Cover Hinge

Use a Dentist Hook to release the Cover Hinge



Remove the Cover Hinge

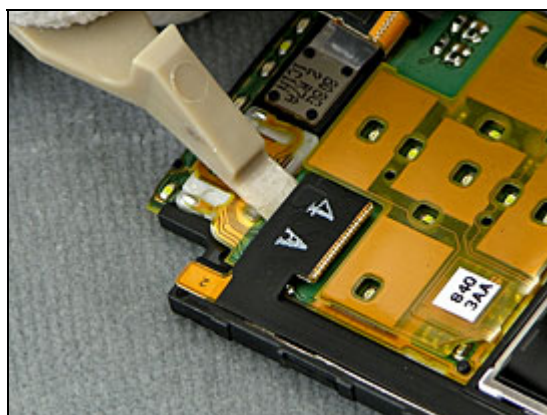


### 3.1.5 Hinge Flex

Use a Front Opening Tool to disconnect the BtB connector.



Use a Front Opening Tool to disconnect the BtB connector.



Use a Flex Film Assembly Tool to loosen the Hinge Flex on this side



and on the other side





## Disassembly Instruction Hinge Flex *(continued)*

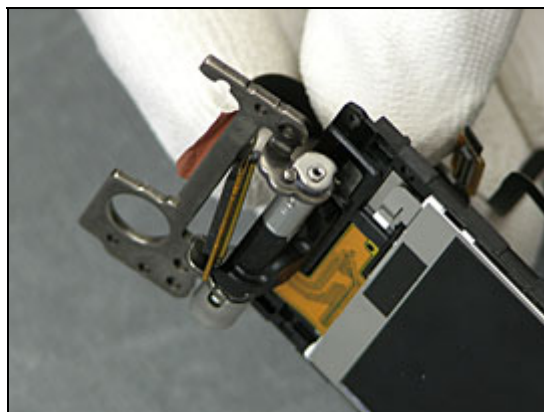
Use a Front Opening Tool to disconnect the BtB connector.



Push the Connector down through the hinge



Remove the Hinge Flex





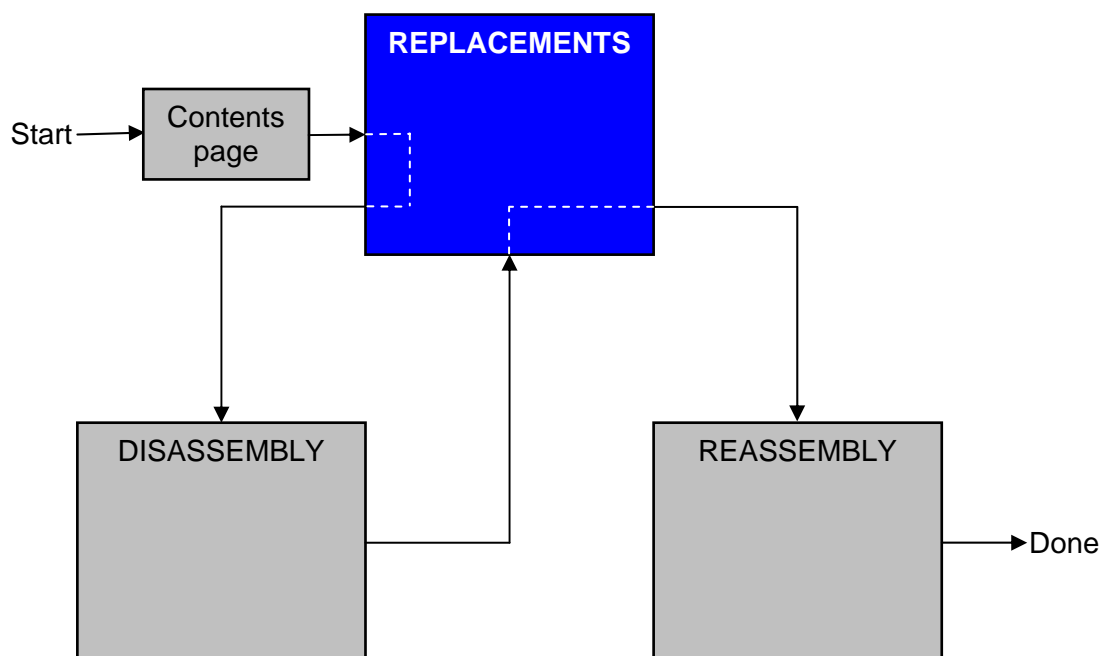
## 4 Replacements

Search for the part to be replaced on the Contents page and go to that instruction to be found in this *Replacements* section.

The instruction usually begins by directing you to the *Disassembly* section with a specification of the instructions you have to carry out in order to disassemble the phone as far as needed before the actual replacement.

Go back to this *Replacements* section and carry out the instruction.

The instruction usually ends by directing you to the *Reassembly* section with a specification of the instructions you have to carry out in order to reassemble the phone.





## **4.1 Cover Battery Sub Assembly**

*Follow the 2.1.1 Disassembly instructions!*

Replace the Cover Battery Sub Assembly.

*Follow the 6.1.5 Reassembly instructions!*

## **4.2 Cap Screw Lower**

*Follow the 2.1.1 – 2.1.2 Disassembly instructions!*

Replace the Cap Screw Lower

*Follow the 6.1.4 – 6.1.5 Reassembly instructions!*

## **4.3 Cover Lower Rear Sub Assembly**

*Follow the 2.1.1 – 2.1.3 Disassembly instructions!*

Replace the Cover Lower Rear Sub Assembly

*Follow the 6.1.3 – 6.1.5 Reassembly instructions!*

## **4.4 Cover Lower Front Sub Assembly**

*Follow the 2.1.1 – 2.1.4 Disassembly instructions!*

Replace the Cover Lower Front Sub Assembly

*Follow the 6.1.2 – 6.1.5 Reassembly instructions!*

## **4.5 Cap Screw Upper Top**

*Follow the 3.1.1 Disassembly instructions!*

Replace the Cap Screw Upper Top

*Follow the 5.1.5 Reassembly instructions!*

## **4.6 Cover Upper Rear Sub Assembly**

*Follow the 2.1.1 – 3.1.2 Disassembly instructions!*

Replace the Cover Upper Rear Sub Assembly

*Follow the 5.1.4 – 6.1.5 Reassembly instructions!!*

## **4.7 Cover Upper Front Assembly**

*Follow the 2.1.1 – 3.1.3 Disassembly instructions!*

Replace the Cover Upper Front Assembly

*Follow the 5.1.3 – 6.1.5 Reassembly instructions!*

## 4.8 Cover Hinge

*Follow the 2.1.1 – 3.1.4 Disassembly instructions!*

Replace the Cover Hinge

*Follow the 5.1.2 – 6.1.5 Reassembly instructions!*

## 4.9 Hinge Flex

*Follow the 2.1.1 – 3.1.5 Disassembly instructions!*

Replace the Hinge Flex

*Follow the 5.1.1 – 6.1.5 Reassembly instructions!*

## 4.10 Hinge Sub Assembly

*Follow the 2.1.1 – 3.1.5 Disassembly instructions!*

*Follow the 4.14 Replacement instructions!*

*Follow the 4.17 Replacement instructions!*

*Follow the 4.18 Replacement instructions!*

*Follow the 4.19 Replacement instructions!*

Replace the Hinge Sub Assembly

*Follow the 4.19 Replacement instructions!*

*Follow the 4.18 Replacement instructions!*

*Follow the 4.17 Replacement instructions!*

*Follow the 4.14 Replacement instructions!*

*Follow the 5.1.1 – 6.1.5 Reassembly instructions!*

## 4.11 Keyboard Main

### Removal

*Follow the 2.1.1 – 2.1.4 Disassembly instructions!*

Use the a pair of Tweezers to remove the Keyboard Main



### INSTALLATION

Use the a pair of Tweezers to install the Keyboard Main

*Follow the 6.1.2 – 6.1.5 Reassembly instructions!*



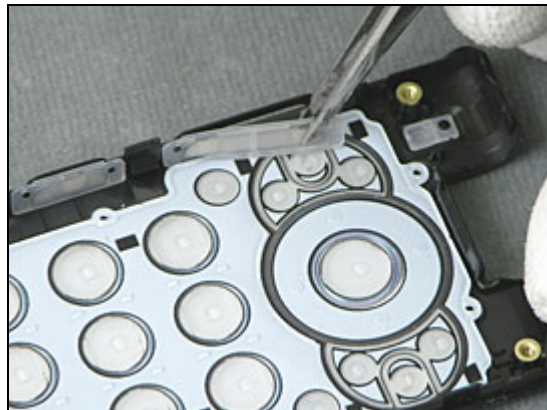
## 4.12 Key Volume

### Removal

*Follow the 2.1.1 – 2.1.4 Disassembly instructions!*  
Use the a pair of Tweezers to remove the Key Volume

### Installation

Use the a pair of Tweezers to install the Key Volume  
*Follow the 6.1.2 – 6.1.5 Reassembly instructions!*



## 4.13 Key Mode

### Removal

*Follow the 2.1.1 – 2.1.4 Disassembly instructions!*  
Use the a pair of Tweezers to remove the Key Mode

### Installation

Use the a pair of Tweezers to install the Key Mode  
*Follow the 6.1.2 – 6.1.5 Reassembly instructions!*





## 4.14 Camera Module QCIF

### Removal

*Follow the 2.1.1 – 3.1.2 Disassembly instructions!*

Use a Front Opening Tool to detach the BtB connector



Use your fingers to remove the Camera Module QCIF



### Installation

Use your fingers to position the Camera Module QCIF



Use your fingers to install the BtB connector

*Follow the 5.1.4 – 6.1.5 Reassembly instructions!*



## 4.15 Magnet

### Removal

*Follow the 2.1.1 – 3.1.3 Disassembly instructions!*

Use a Dentist Hook to remove the Magnet

### Installation

Use your fingers to install the Magnet

*Follow the 5.1.3 – 6.1.5 Reassembly instructions!*

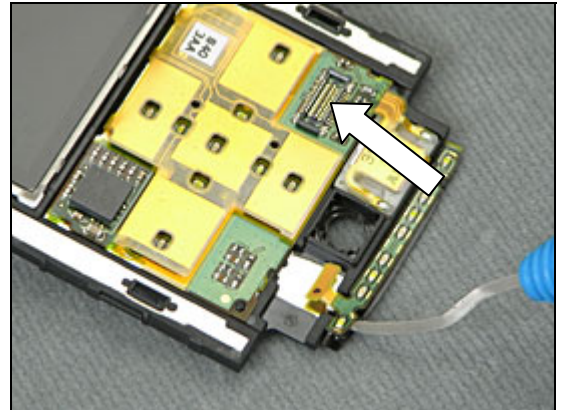


## 4.16 Touch key Module

### Removal

*Follow the 2.1.1 – 3.1.3 Disassembly instructions and follow 4.13 Replacement instructions!*

Use a Front Opening Tool to detach BtB connector at the arrow and use a Dentist Hook to start detach the Touch key Module



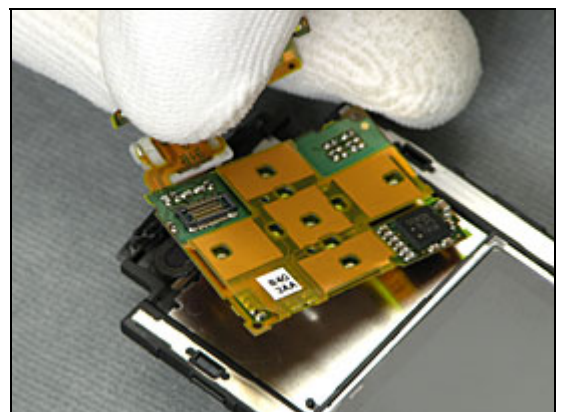
Continue with using a Front Opening Tool to detach the speaker



Use the Nylon Pointer to detach the Touch key Module



Use your fingers to remove a Touch key Module





## Touch key Module *continue*

### Installation

Use your fingers to install a Touch key Module



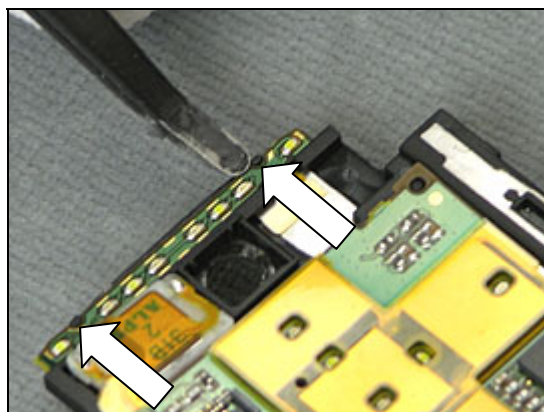
Put the speaker in its cavity



Use a Flex Film Assembly Tool to get it in place



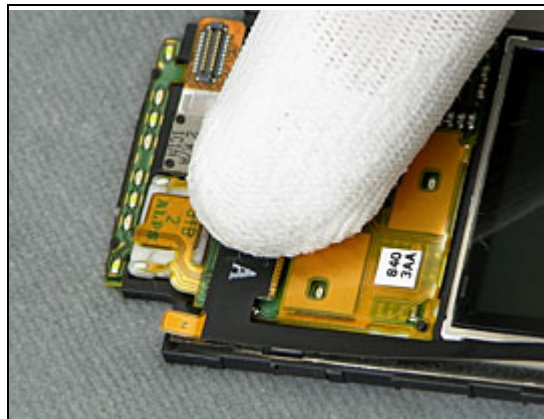
Look so that the guiding pins are in positions



## Touch key Module *continue*

Use your fingers to install the BtB connector

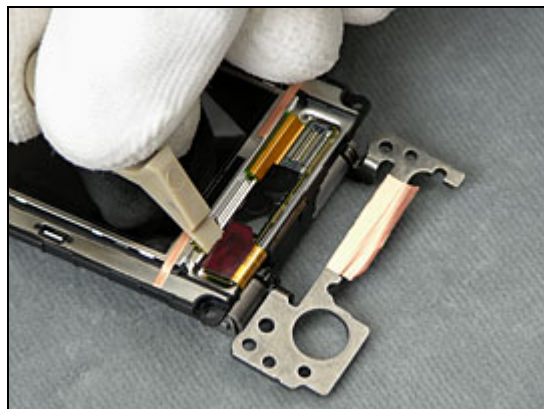
*Follow the 5.1.3 – 6.1.5 Reassembly instructions and follow 4.13 Replacement instructions !*



## 4.17 Display 2.22 TFT

### Removal

*Follow the 2.1.1 – 3.1.3 Disassembly instructions!*  
Use a Front Opening Tool to remove the BtB connector



Use a Front Opening Tool to release the Display 2.22 TFT



Use your fingers to remove the Display 2.22 TFT



### Installation

Use your fingers to install the Display 2.22 TFT





## Display 2.22 TFT (continue)

Use your fingers to position the Display 2.22 TFT



Use your fingers to install the BtB connector  
*Follow the 5.1.3 – 6.1.5 Reassembly instructions!*

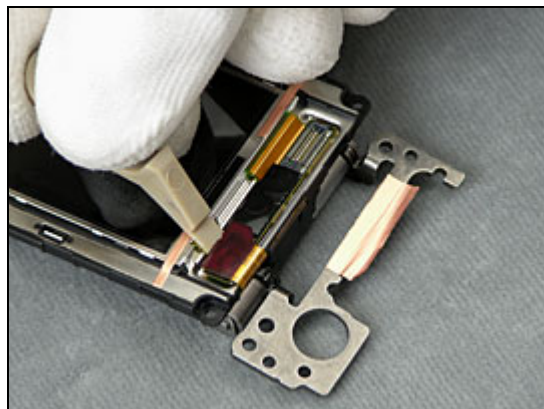


## 4.18 Display 1.5 TFT

### Removal

*Follow the 2.1.1 – 3.1.2 Disassembly instructions!*

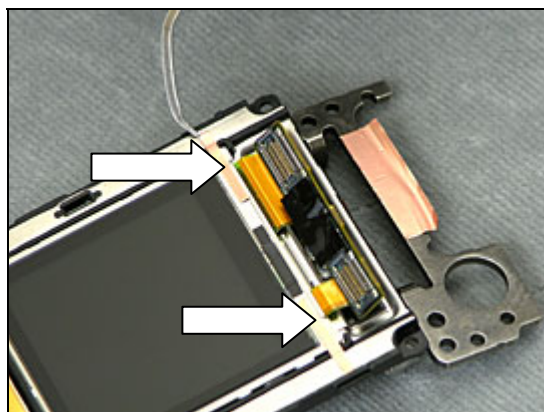
Use a Front Opening Tool to detach the BtB connector



Use a Front Opening Tool to detach the PCB part of the Display 1.5 TFT



Use a Dentist Hook to remove the two adhesive

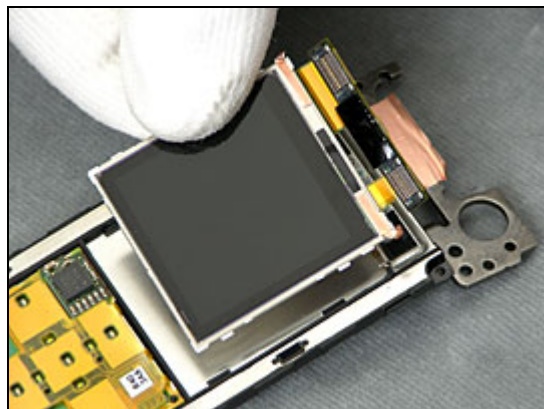


Use a Front Opening Tool to release the Display 1.5 TFT



## Display 1.5 TFT continue

Use your fingers to remove the Display 1.5 TFT

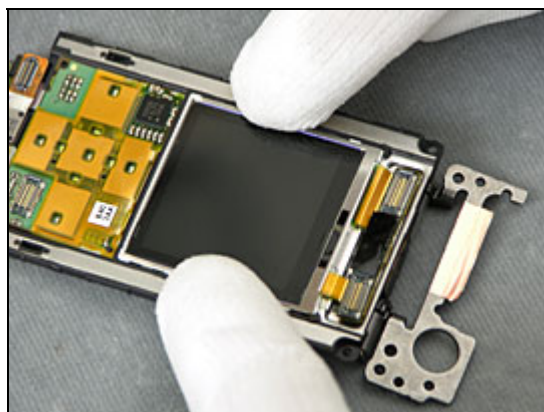


### Installation

Use your fingers to install the Display 1.5 TFT

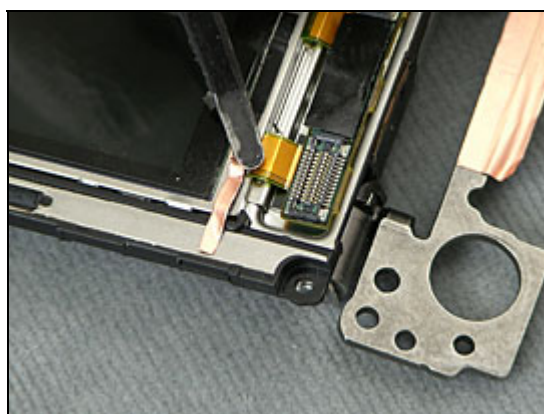


Use your fingers to position the Display 1.5 TFT



Use a Flex Film Assembly Tool to attach new Sheet upper sub LCD

*Follow the 5.1.4 – 6.1.5 Reassembly instructions!*







## 4.19 Camera 3.2 Mpixel

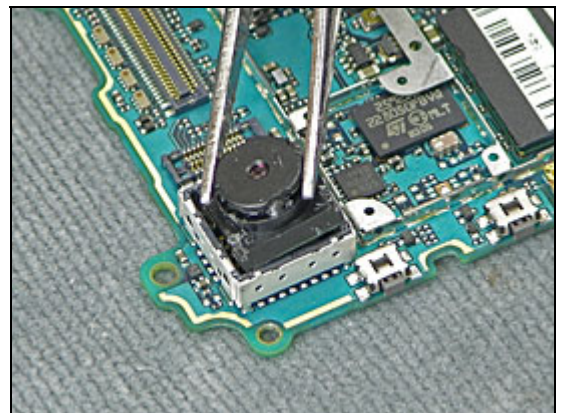
### Removal

*Follow the 2.1.1 – 2.1.5 Disassembly instructions!*

Use the Camera Removal Tool 3Mpixel to detach the 3Mpixel camera

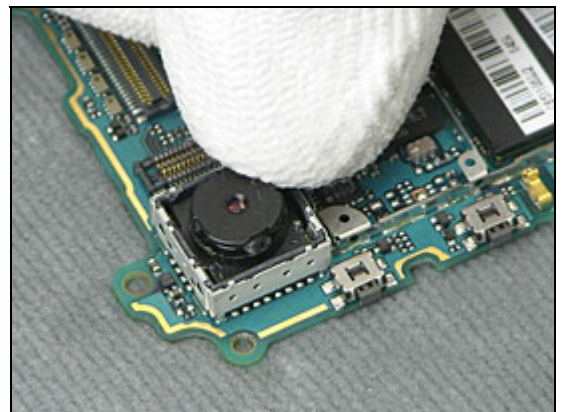


Use a pair of Tweezers to remove the 3Mpixel camera



### Installation

Use your fingers to install the 3Mpixel camera



## 4.20 Dome sheet

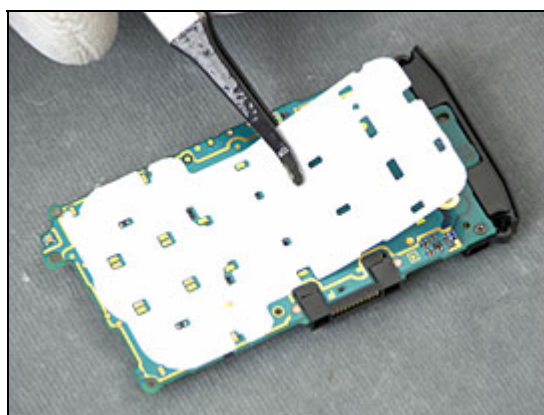
### Removal

*Follow the 2.1.1 – 2.1.4 Disassembly instructions!*

Use a Nylon Pointer to detach the Dome sheet

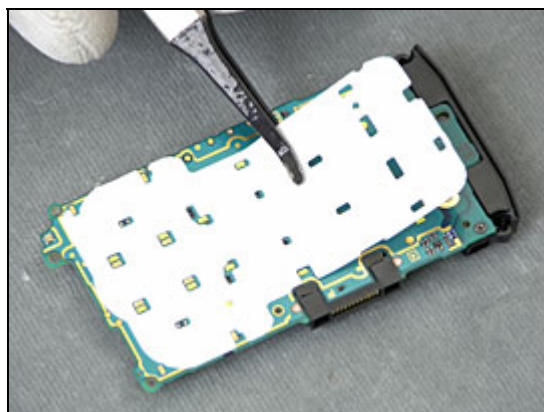


Use a Flex Film Assembly Tool to remove the Dome Sheet



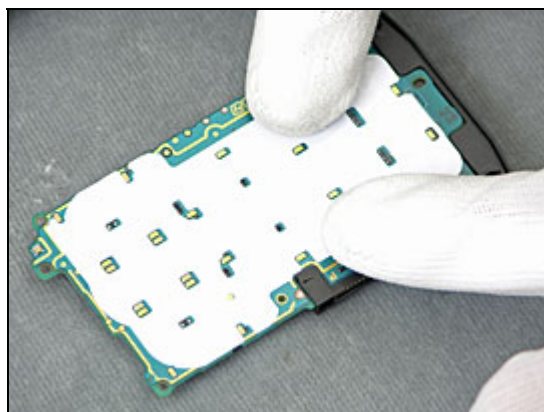
### Installation

Use a Flex Film Assembly Tool to install a new Dome Sheet



Use your finger to get it on place

*Follow the 6.1.2 – 6.1.5 Reassembly instructions!*



## 4.21 Shield Can Lid

### Removal

*Follow the 2.1.1 – 2.1.5 Disassembly instructions!*

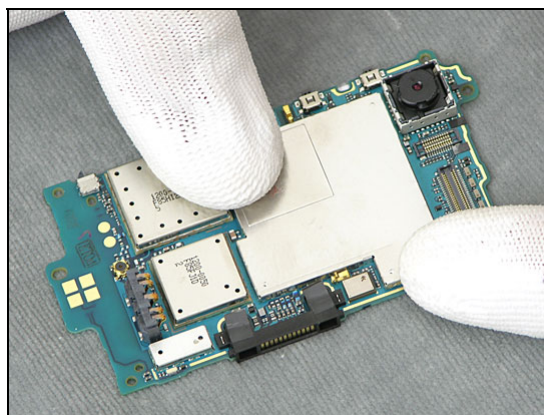
Use a Front Opening Tool to remove the Shield Can Lid



### Installation

Use your fingers to install the Shield Can Lid

*Follow the 6.1.1 – 6.1.5 Reassembly instructions!*





## 4.22 Memory flex module

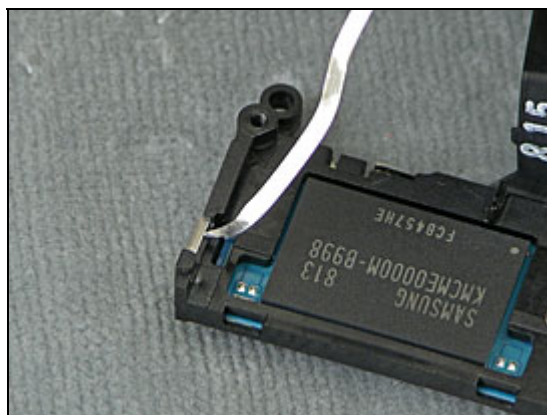
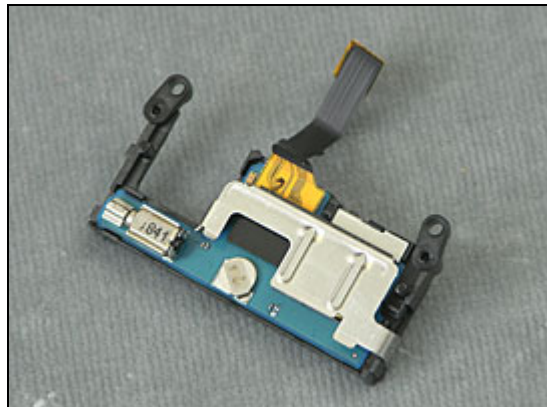
### Removal

*Follow the 2.1.1 – 2.1.6 Disassembly instructions!*

Use a Dentist Hook to detach the Memory/Sim PWB Carrier Plate

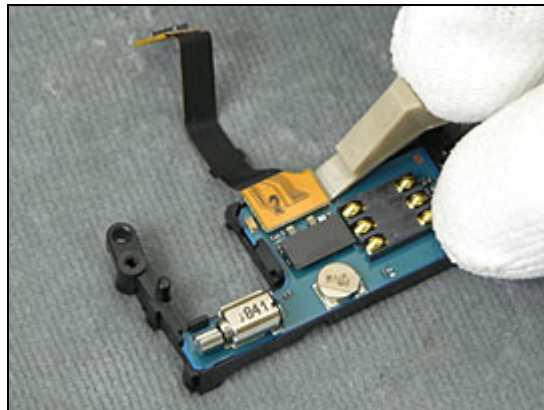
Use a Dentist Hook to detach the Memory/Sim PWB Carrier Plate

Use your fingers to remove the Memory/Sim PWB Carrier Plate



## Memory flex module continue

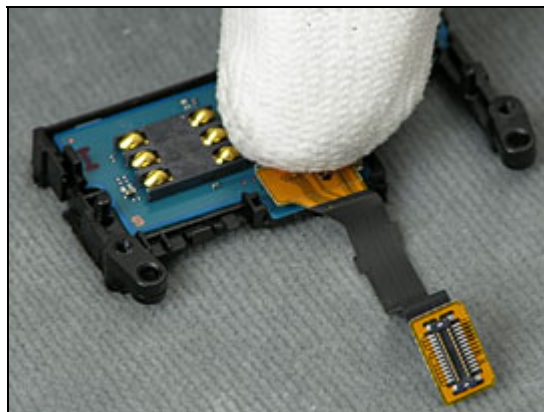
Use a Front Opening Tool to detach the Memory flex module



### Installation



Use your fingers to attach the Memory flex module



Use your fingers to attach the Memory/Sim PWB Carrier Plate

*Follow the 6.1.1 – 6.1.5 Reassembly instructions!*



## 4.23 Memory/Sim PWB

### Removal

*Follow the 2.1.1 – 2.1.6 Disassembly instructions!*

Use a Dentist Hook to detach the Memory/Sim PWB Carrier Plate

Use a Dentist Hook to detach the Memory/Sim PWB Carrier Plate

Use your fingers to remove the Memory/Sim PWB Carrier Plate





## Memory/Sim PWB (continue)

Use a Front Opening Tool to detach the Memory flex module



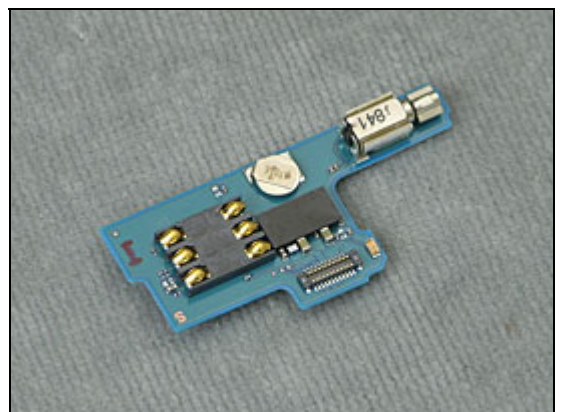
Use a Front Opening Tool to detach the Memory/Sim PWB



Use your fingers to remove the Memory/Sim PWB

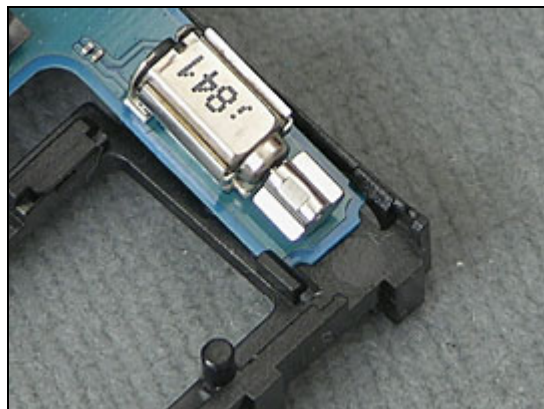


## Installation



## Memory/Sim PWB (continue)

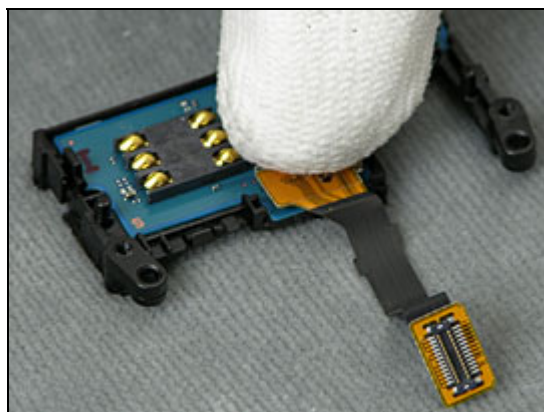
Use your fingers to slide in the Memory/Sim PWB into the Memory/Sim PWB Carrier holder with this side first



Then push down the other side with your fingers



Use your fingers to attach the Memory flex module



Use your fingers to attach the Memory/Sim PWB Carrier Plate

*Follow the 6.1.1 – 6.1.5 Reassembly instructions!*

**Note! After Reassembly the phone you need to do an Software Content Refresh**





## 4.24 Memory/Sim PWB Carrier Holder

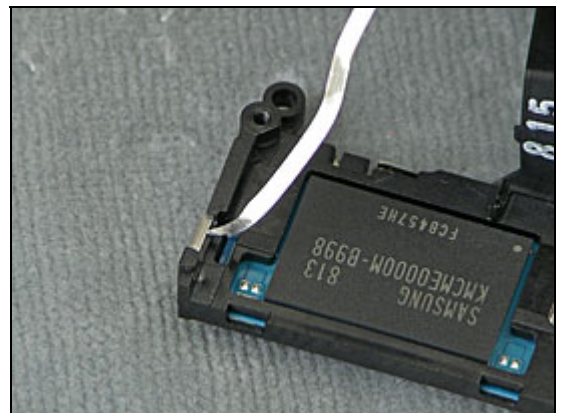
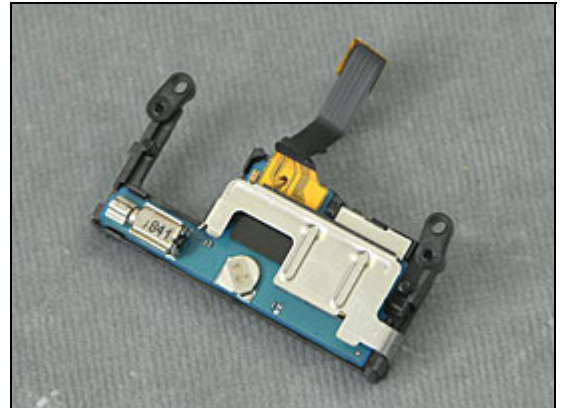
### Removal

*Follow the 2.1.1 – 2.1.6 Disassembly instructions!*

Use a Dentist Hook to detach the Memory/Sim PWB Carrier Plate

Use a Dentist Hook to detach the Memory/Sim PWB Carrier Plate

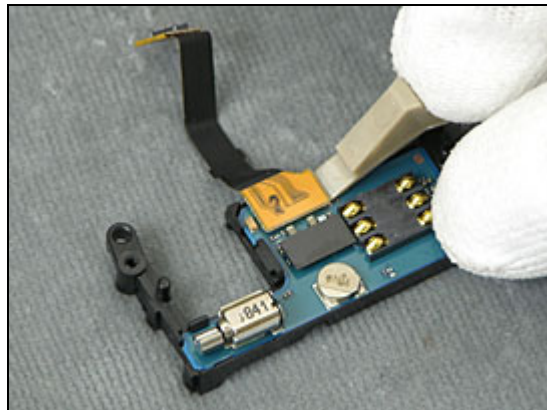
Use your fingers to remove the Memory/Sim PWB Carrier Plate



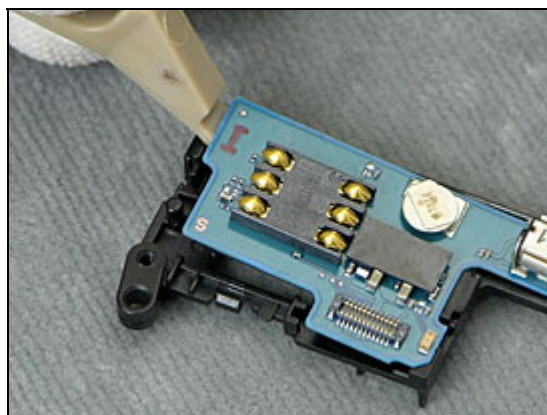


## Memory/Sim PWB Carrier Holder continue

Use a Front Opening Tool to detach the Memory flex module



Use a Front Opening Tool to detach the Memory/Sim PWB



Use your fingers to remove the Memory/Sim PWB

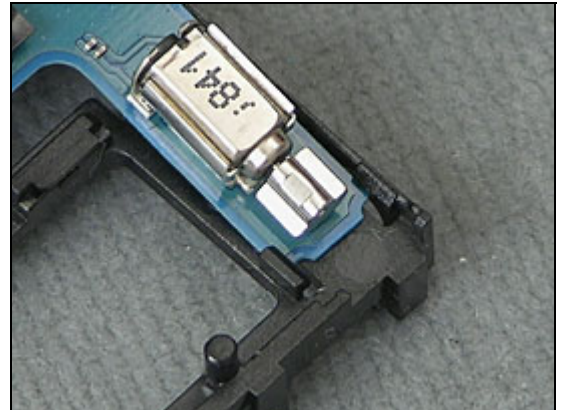


## Installation



## Memory/Sim PWB Carrier Holder (continue)

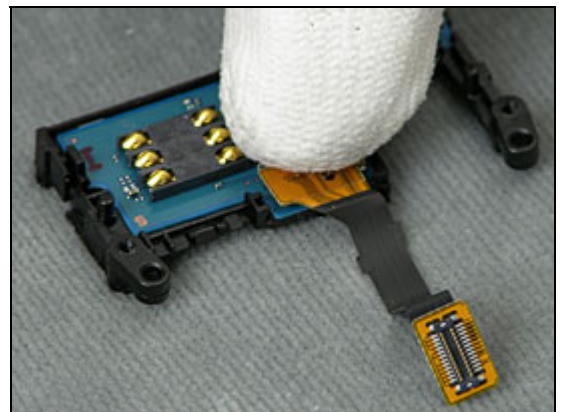
Use your fingers to slide in the Memory/Sim PWB into the Memory/Sim PWB Carrier holder with this side first



Then push down the other side with your fingers



Use your fingers to attach the Memory flex module



Use your fingers to attach the Memory/Sim PWB Carrier Plate

*Follow the 6.1.1 – 6.1.5 Reassembly instructions!*



## 4.25 Memory/Sim PWB Carrier Plate

### Removal

*Follow the 2.1.1 – 2.1.6 Disassembly instructions!*

Use a Dentist Hook to detach the Memory/Sim PWB Carrier Plate

Use a Dentist Hook to detach the Memory/Sim PWB Carrier Plate

Use your fingers to remove the Memory/Sim PWB Carrier Plate



## Memory/Sim PWB Carrier Plate *(continue)*

### Installation

Use your fingers to install the Memory/Sim PWB Carrier Plate

*Follow the 6.1.1 – 6.1.5 Reassembly instructions!*



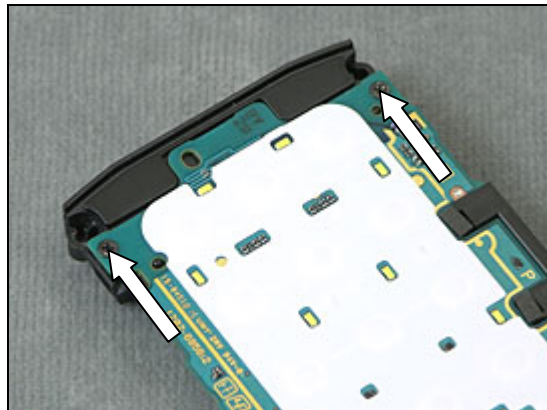


## 4.26 Antenna Main

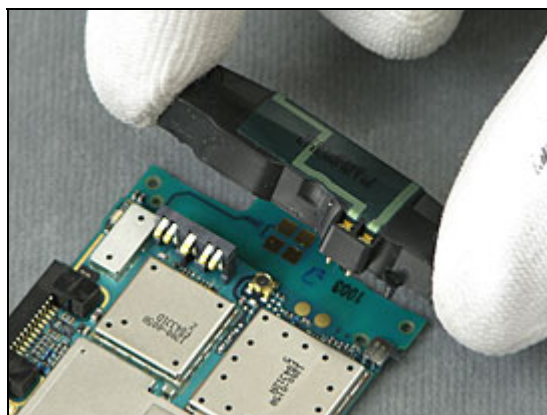
### Removal

*Follow the 2.1.1 – 2.1.5 Disassembly instructions!*

Use a JCIS Bit to remove the two Screws



Use your fingers to remove the Antenna main

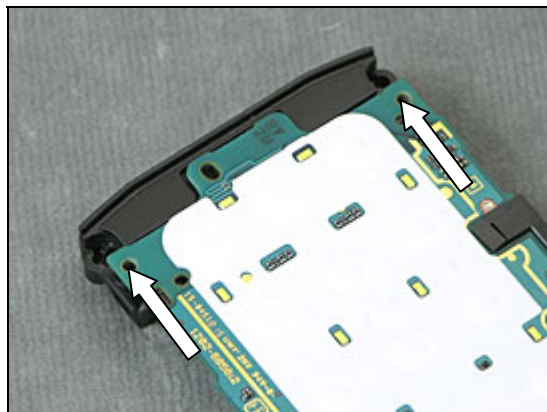


### Installation

Install a antenna main

Use a JCIS Bit to tighten Screws with 9 Ncm torque

*Follow the 6.1.1 – 6.1.5 Reassembly instructions!*



## 4.27 Cushion Video Camera

### Removal

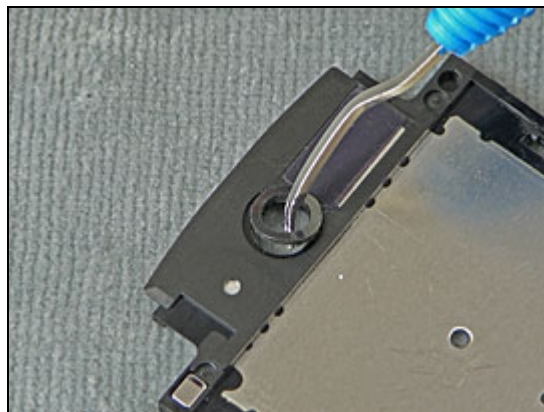
*Follow the 2.1.1 – 3.1.3 Disassembly instructions!*

Use a Dentist Hook to remove the Cushion Video Camera

### Installation

Use a pair of Tweezers to install new Cushion Video Camera

*Follow the 5.1.3 – 6.1.5 Reassembly instructions!*





## 4.28 Net Receiver

### Removal

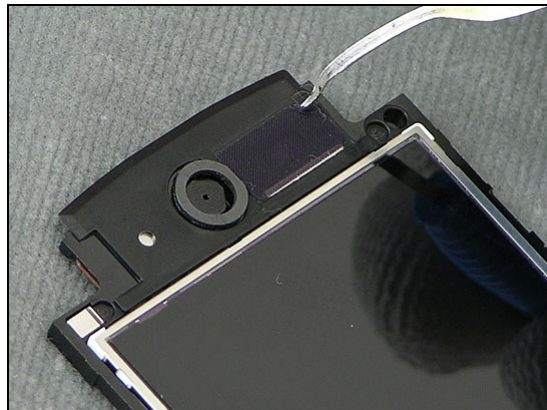
*Follow the 2.1.1 – 3.1.3 Disassembly instructions!*

Use a Dentist Hook to remove the Net receiver

### Installation

Use a pair of Tweezers to install a new Net receiver

*Follow the 5.1.3 – 6.1.5 Reassembly instructions!*



## 4.29 Cushion System Connector

### Removal

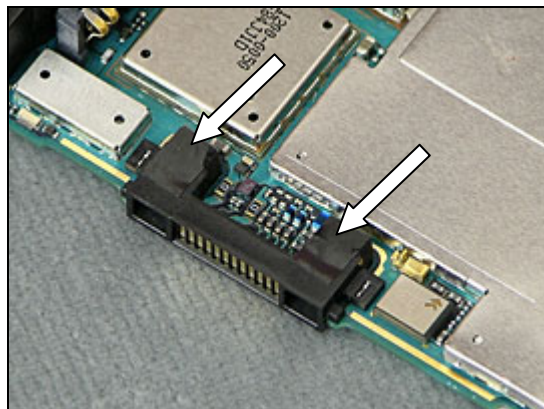
*Follow the 2.1.1 – 2.1.4 Disassembly instructions!*

Use a pair of Tweezers to remove the Cushion System connector

### Installation

Use a pair of Tweezers to install the Cushion System connector

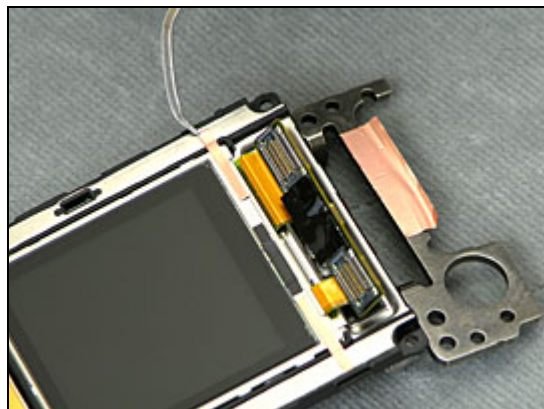
*Follow the 6.1.2 – 6.1.5 Reassembly instructions!*



## 4.30 Sheet upper sub LCD

### Removal

*Follow the 2.1.1 – 3.1.5 Disassembly instructions!*  
Use a Dentist Hook to remove the Sheet upper sub LCD



### Installation

Use a Flex Film Assembly Tool to install new Sheet upper sub LCD  
*Follow the 5.1.1 – 6.1.5 Reassembly instructions!*

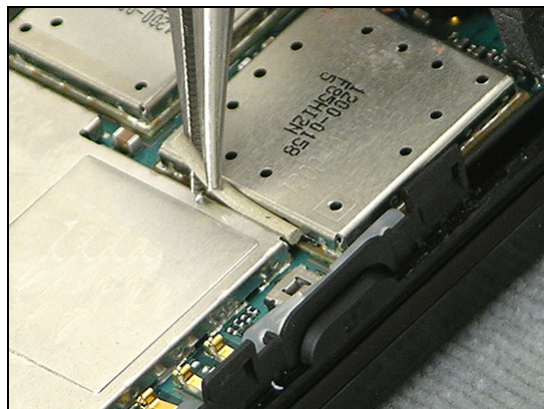


## 4.31 Cushion Thor

### Removal

*Follow the 2.1.1 – 2.1.3 Disassembly instructions and follow replacement 4.32 to remove Sheet RF1!*

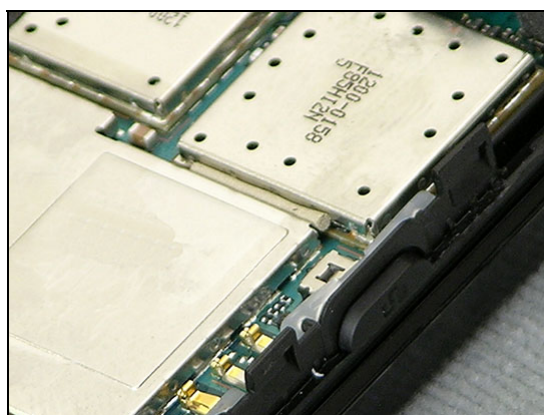
Use a pair of Tweezers to remove the Cushion Thor



### Installation

Use a pair of Tweezers to install a Cushion Thor

*Follow the 6.1.3 – 6.1.5 Reassembly instructions and follow replacement 4.32 to install Sheet RF1!*



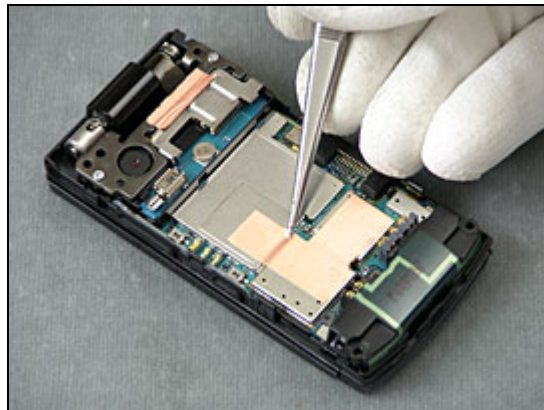
## 4.32 Sheet RF1

### Removal

*Follow the 2.1.1 – 2.1.3 Disassembly instructions!*  
Use a pair of Tweezers to remove the Sheet RF1

### Installation

Use a pair of Tweezers to install the Sheet RF1  
*Follow the 6.1.3 - 6.1.5 Reassembly instructions!*







## 4.33 Plastic Sheet(Sub PWB)

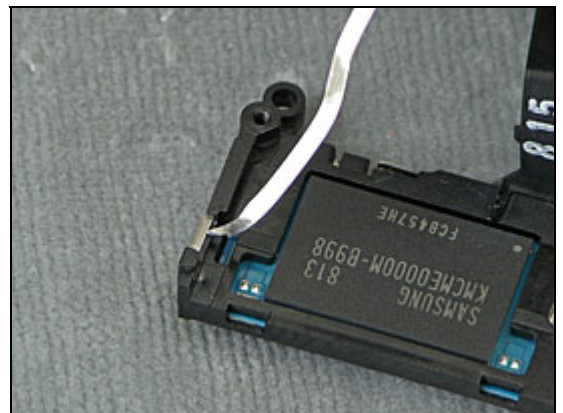
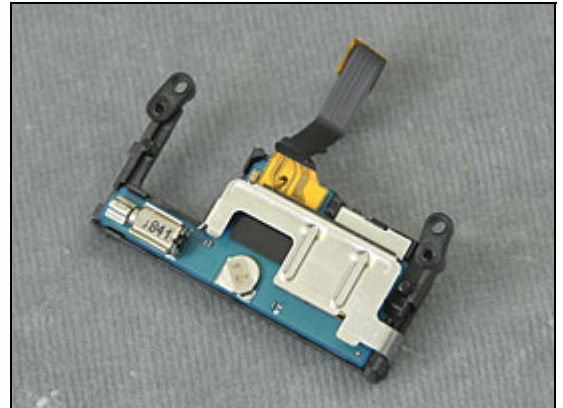
### Removal

*Follow the 2.1.1 – 2.1.6 Disassembly instructions!*

Use a Dentist Hook to detach the Memory/Sim PWB Carrier Plate

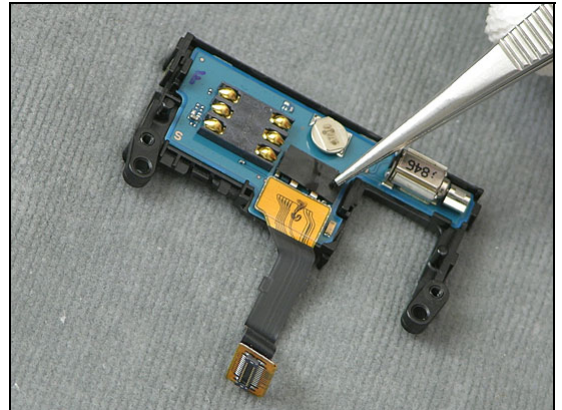
Use a Dentist Hook to detach the Memory/Sim PWB Carrier Plate

Use your fingers to remove the Memory/Sim PWB Carrier Plate



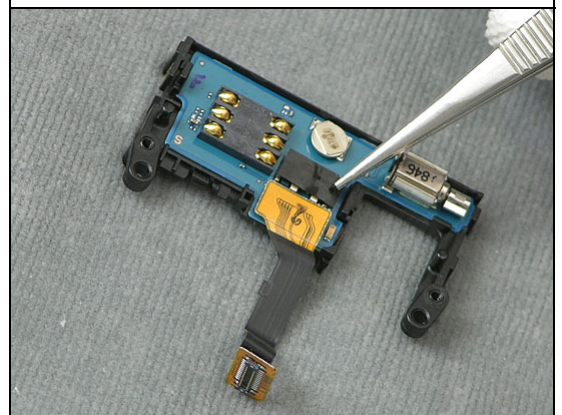
## ***Plastic Sheet(Sub PWB) (continue)***

Use a pair of Tweezers to remove the plastic sheet (sub pwb)



### **Installation**

Use a pair of Tweezers to install the plastic sheet (sub pwb)



Use your fingers to install the Memory/Sim PWB Carrier Plate

*Follow the 6.1.1 – 6.1.5 Reassembly instructions!*



## 4.34 Sheet (Hinge Frame)

### Removal

*Follow the 2.1.1 – 2.1.3 Disassembly instructions!*

Use a pair of Tweezers to remove the Sheet (Hinge frame)

### INSTALLATION

Use a pair of Tweezers to install the Sheet (Hinge frame)

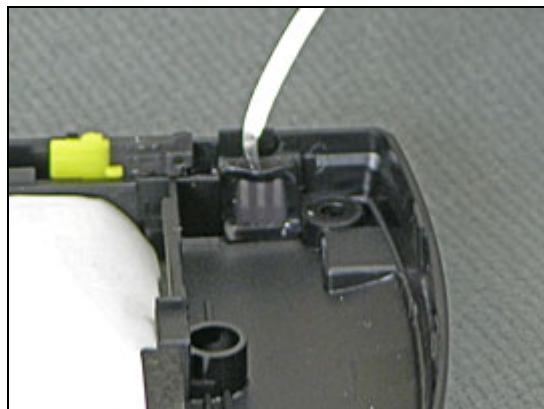
*Follow the 6.1.3 – 6.1.5 Reassembly instructions!*



## 4.35 Cushion Speaker

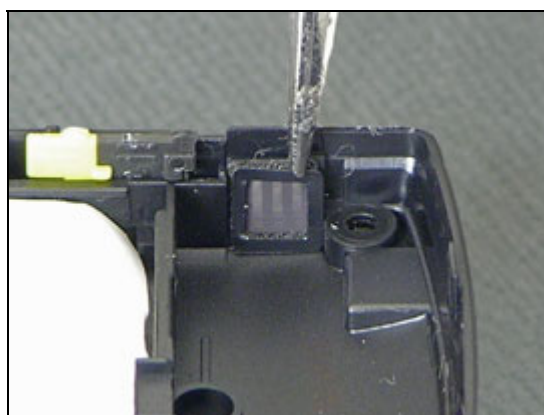
### Removal

*Follow the 2.1.1 – 2.1.3 Disassembly instructions!*  
Use a Dentist Hook to remove the Cushion Speaker



### Installation

Use a pair of Tweezers to install the Cushion Speaker  
*Follow the 6.1.3 – 6.1.5 Reassembly instructions!*



## 4.36 Key Locking Black

### Removal

*Follow the 2.1.1 – 2.1.3 Disassembly instructions!*

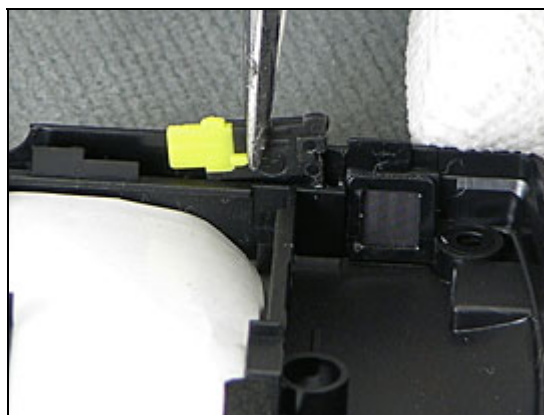
Use a Dentist Hook to remove the Key Locking Black



### Installation

Use a pair of Tweezers to install the Key Locking Black

*Follow the 6.1.3 – 6.1.5 Reassembly instructions!*





## 4.37 Cushion Main Camera

### Removal

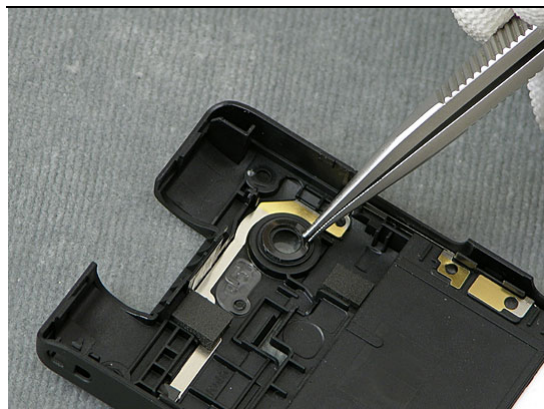
*Follow the 2.1.1 – 2.1.3 Disassembly instructions!*

Use a pair of Tweezers to remove the Cushion Main Camera

### Installation

Use a pair of Tweezers to install the Cushion Main Camera

*Follow the 6.1.3 – 6.1.5 Reassembly instructions!*



## 4.38 Water Indicator

### Removal

*Follow the 2.1.1 – 2.1.3 Disassembly instructions!*  
Use a pair of Tweezers to remove the Water Indicator

### INSTALLATION

Use a pair of Tweezers to install the Water Indicator  
*Follow the 6.1.3 – 6.1.5 Reassembly instructions!*



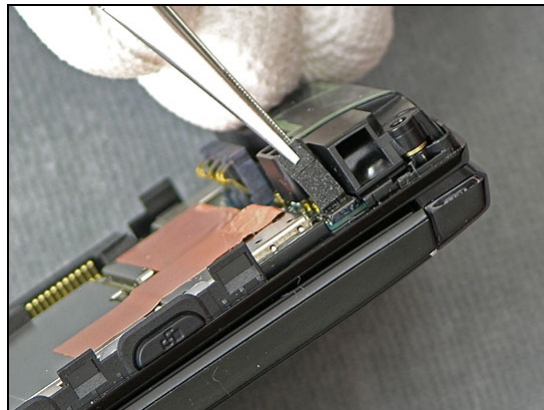
## 4.39 Cushion Lock

### Removal

*Follow the 2.1.1 – 2.1.3 Disassembly instructions!*  
Use a pair of Tweezers to remove the Cushion Lock

### Installation

Use a pair of Tweezers to install the Cushion Lock  
*Follow the 6.1.3 – 6.1.5 Reassembly instructions!*



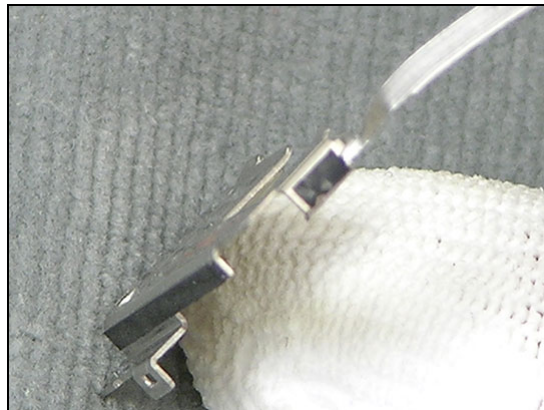
## 4.40 Sheet PWB

### Removal

*Follow the 2.1.1 – 2.1.6 Disassembly instructions!*  
Use a Dentist Hook to remove the Sheet PWB

### Installation

Use a pair of Tweezers to install the Sheet PWB  
*Follow the 6.1.1 – 6.1.5 Reassembly instructions!*



## 4.41 Label

*Follow the 2.1.1 Disassembly instructions!*

Read the old label and/or write the information into the "Label make" program before removal

Note the position of the label before removal

Heat up the label by using hot air, if needed.

Carefully remove the label without causing scratches

If there still are residues, clean the surface with isopropyl alcohol



Check that the proper label format is loaded in the Zebra printer.

Write a new label by using the program "Label make" and check that the printing is OK.

Take the new label and place it onto the frame as in the adjacent picture.

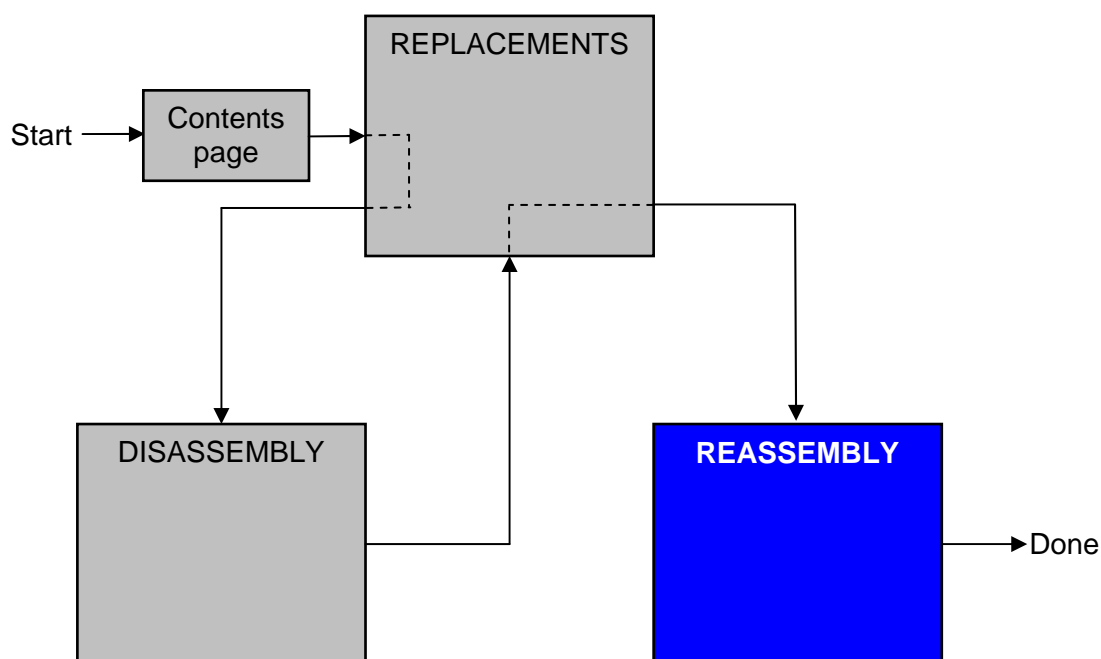
**ONE LABEL ONLY IS ALLOWED!**

*Follow the 6.1.5 Reassembly instructions!*



## 5 Reassembly Upper Unit

After replacing a part being listed in Replacements, the instruction of that section usually ends by directing you to this Reassembly section with a specification of the instructions you have to carry out in order to reassemble the phone.



### 5.1 Overview

The reassembly is done in the following sequence:

1. Hinge Flex
2. Cover Hinge
3. Cover Upper Front Assembly
4. Cover Upper Rear Sub Assembly
5. Cap Screw Upper Top



### 5.1.1 Hinge Flex

Push the Hinge Flex Connector thru the Hinge according to the picture



Wrap the Hinge Flex around the Hinge once



Push the Hinge Flex Connector thru the Hinge once again

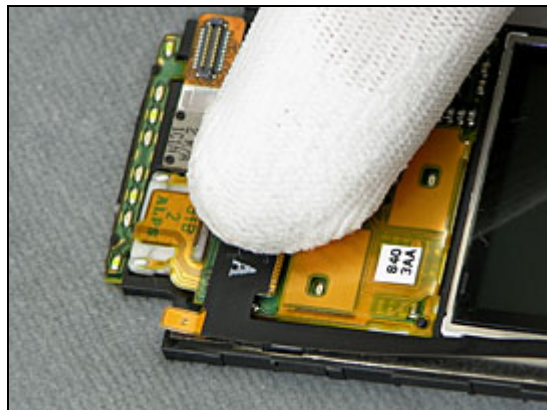


Connect the Hinge Flex Connector to the LCD Assembly

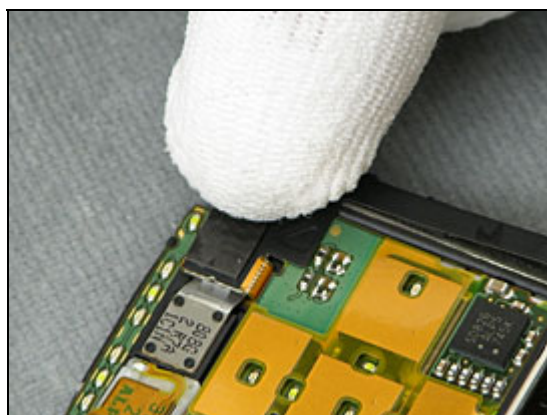


## Reassembly Instruction Hinge Flex (*continued*)

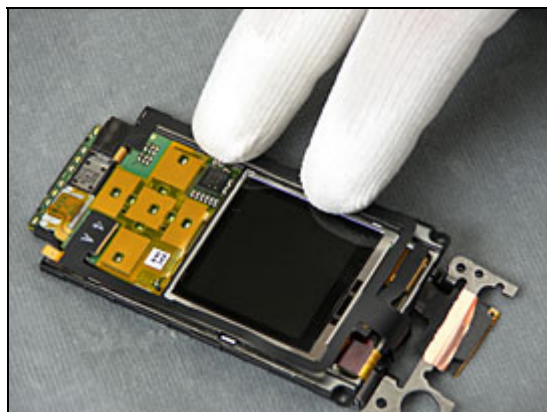
Connect the Hinge Flex Connector to the LCD Assembly



Connect the Hinge Flex Connector to the LCD Assembly



Fix the Hinge Flex to the LCD Assembly by pressing with your fingers

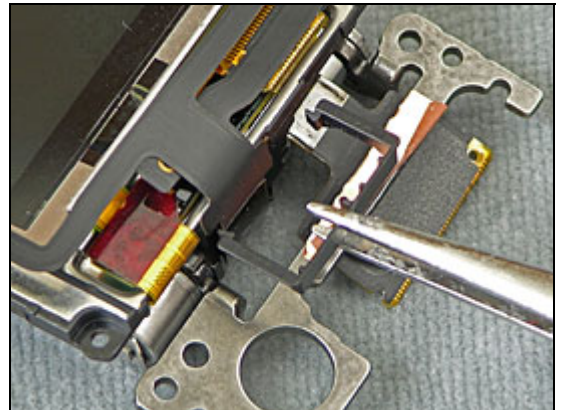


on both sides



## 5.1.2 Cover Hinge

Mount the Cover Hinge



### 5.1.3 Cover Upper Front Assembly

Put the Cover Upper Front Assembly in place



Engage the latches by pressing with your fingers





## 5.1.4 Cover Upper Rear Sub Assembly

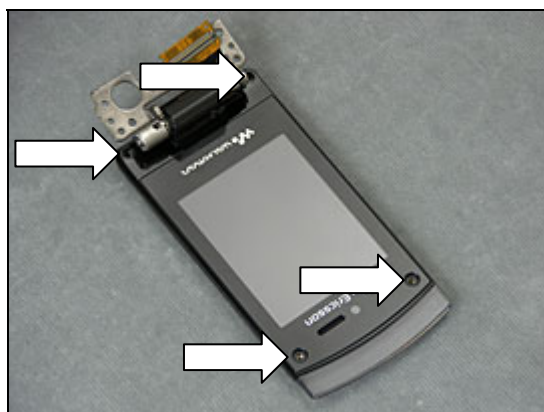
Put the Cover Upper Rear Sub Assembly in place



Engage the latches by pressing with your fingers



Use a JCIS Bit to tighten four Screws with 10 Ncm torque.



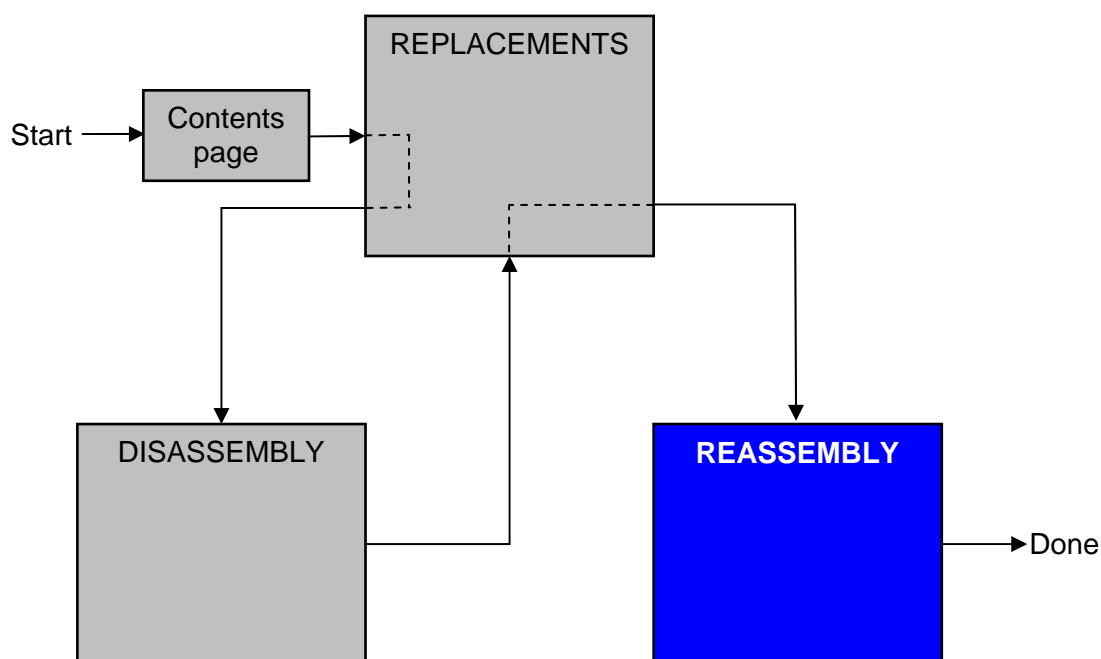
## 5.1.5 Cap Screw Upper Top

Mount new Cap Screw Upper Top



## 6 Reassembly Lower Unit

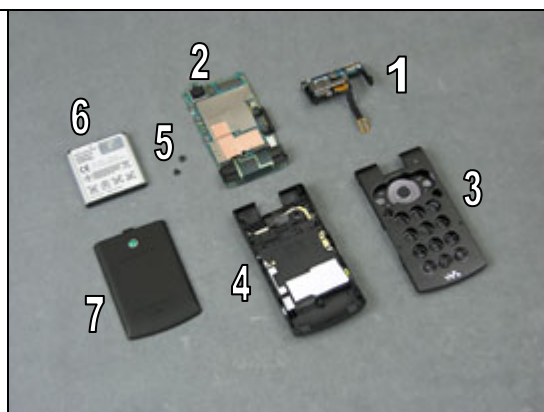
After replacing a part being listed in Replacements, the instruction of that section usually ends by directing you to this Reassembly section with a specification of the instructions you have to carry out in order to reassemble the phone.



### 6.1 Overview

The reassembly is done in the following sequence:

1. Memory Sub Assembly
2. PCB
3. Cover Lower Front Sub Assembly
4. Cover Lower Rear Sub Assembly
5. Cap Screw lower
6. Battery
7. Cover Battery Sub Assembly

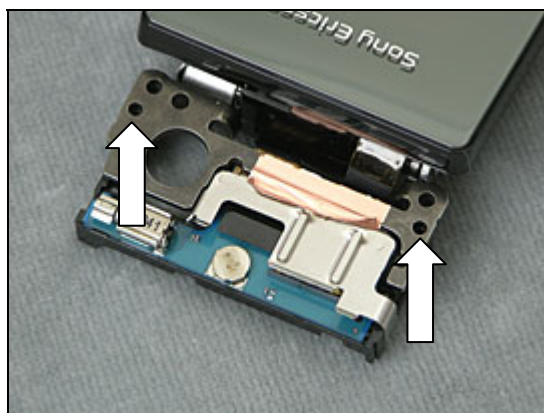


## 6.1.1 Memory Sub Assembly and PCB

Put the Memory Sub Assembly in place



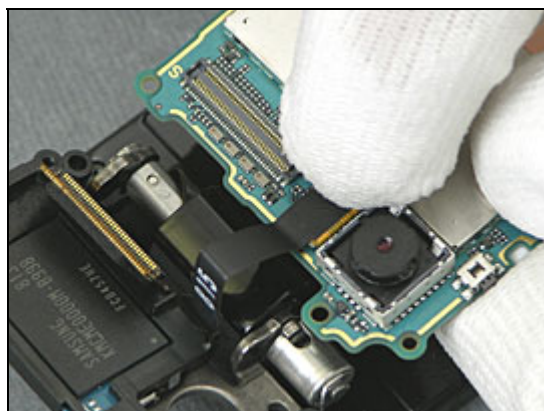
Use a JCIS Bit to tighten two Screws with 9 Ncm torque.



Attach the conductive tape with your finger

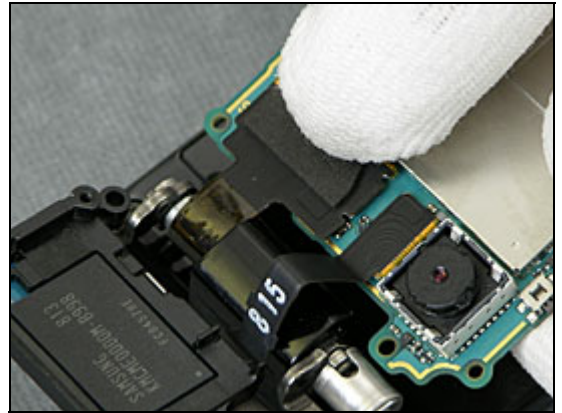


Connect the Flex Film Connector to the PCB

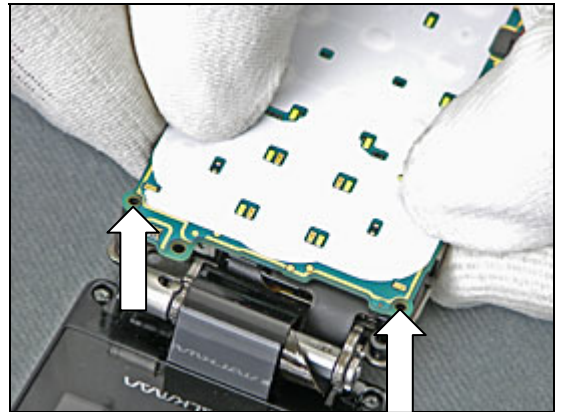


## Reassembly Instruction Memory Sub Assembly and PCB (continued)

Connect the Flex Film Connector to the PCB.



Flip the PCB over and put in position.  
Use a JCIS Bit to tighten two Screws with 9 Ncm torque.





## 6.1.2 Cover Lower Front Sub Assembly

Put the Cover Lower Front Sub Assembly in position

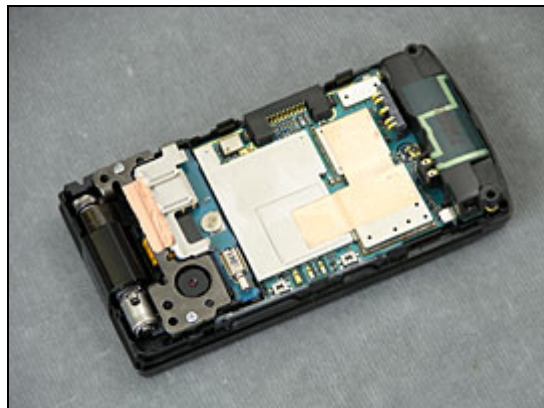


Engage the latches by pressing with your fingers



### 6.1.3 Cover Lower Rear Sub Assembly

Close the Phone



Put the Cover Lower Rear Sub Assembly in position.



Engage the latches by pressing with your fingers



Use a Torx No. 6 (T6) Bit to tighten four Screws with 10 Ncm torque.



## 6.1.4 Cap Screw Lower

Mount two **NEW** Cap Screw Lower



## 6.1.5 Battery and Cover Battery Sub Assembly

Put the Battery back in place



Put the Cover Battery Sub Assembly back in place





## 7 Revision history

Rev.	Date	Changes / Comments
1	2008-07-30	Initial release
2	2008-09-01	In Chapter 4.22 added that you need to do an Software Content Refresh when you have changed the Memory flex module
3	2008-09-26	<ul style="list-style-type: none"><li>Changed part number on Flex Film Assembly Tool from NTZ122521 to NTZ112521</li></ul>